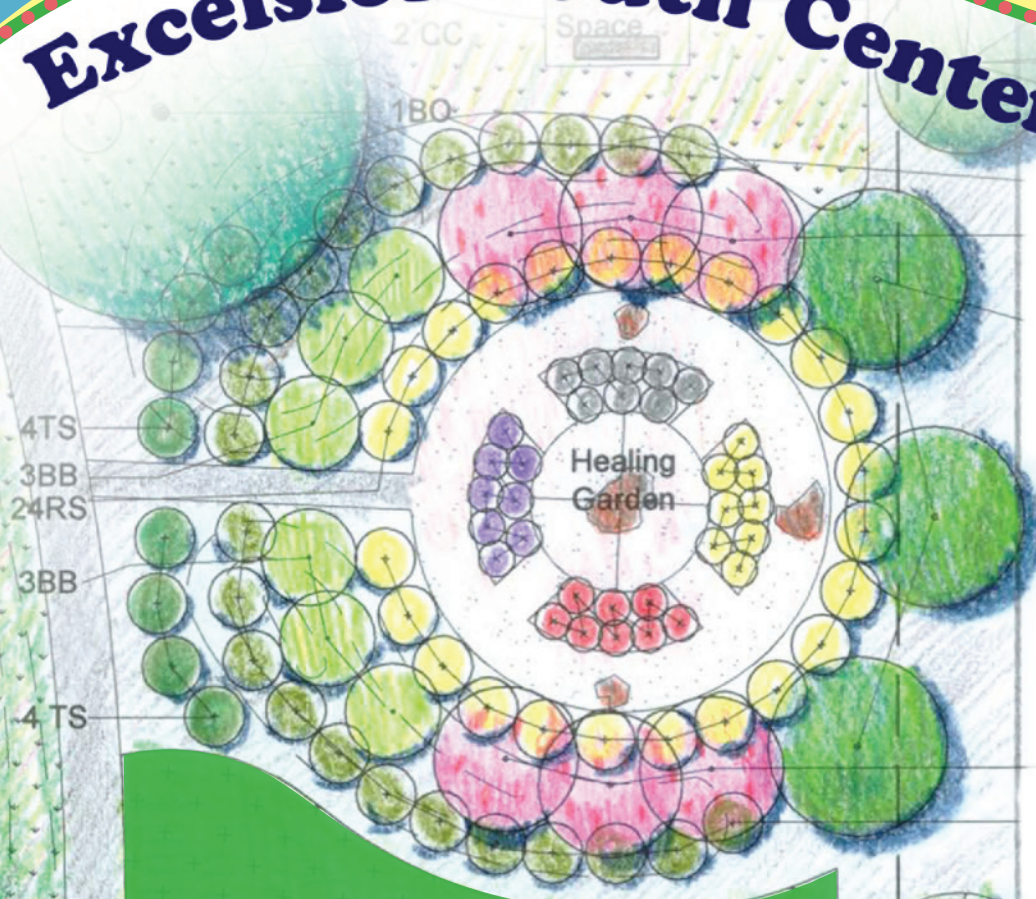


Excelsior Youth Center Needs Your Support



Excelsior Youth Center is a residential treatment program created in 1973, serving girls ages 11-18 with emotional and behavior difficulties. At any given time, Excelsior is home to about 180 girls who participate in a structured, supervised treatment and living program while receiving a certified education at Excelsior's middle or high school. The Center is committed to the treatment and education of young females to enhance their successful reintegration into their families and their communities.

Featured on 9 News!
[\(Click Here\)](#)

Help these girls find a place of solitude!

Recently, Excelsior completed a fund raising effort to begin construction of an outdoor Swimming Pool and Recreation Center. Architectural services were donated by Ware Malcomb. Design Workshop Foundation donated design services for the landscaping of the recreational and garden areas adjacent to the building. It is our collective desire to strike a balance in our pursuit of socially equitable, environmentally innovative, artistically inspired and economically sensible design solutions, while balancing our lives through public service for the improvement of our communities and of our environments. The therapeutic garden areas include a performance area with a pergola, a reflective memorial space and a healing garden that will promote emotional growth and wellness. This project gives the troubled youth who reside on the campus something they deserve - a little bit of what the rest of us enjoy on a day to day basis.

How You Can Help

In addition to the design, the **Design Workshop Foundation** is helping Excelsior solicit donations for planting, hardscape, irrigation, furnishings, and labor associated with construction of the landscape. To proceed with our scheduled installation days, we are looking for the materials and plants listed on the following page. Please review the list on the following page to see if there is anything you can donate.

What You'll Get in Return

- ✓ Tax Breaks
- ✓ Site plaque or donor brick
- ✓ Free publicity



DESIGNWORKSHOP

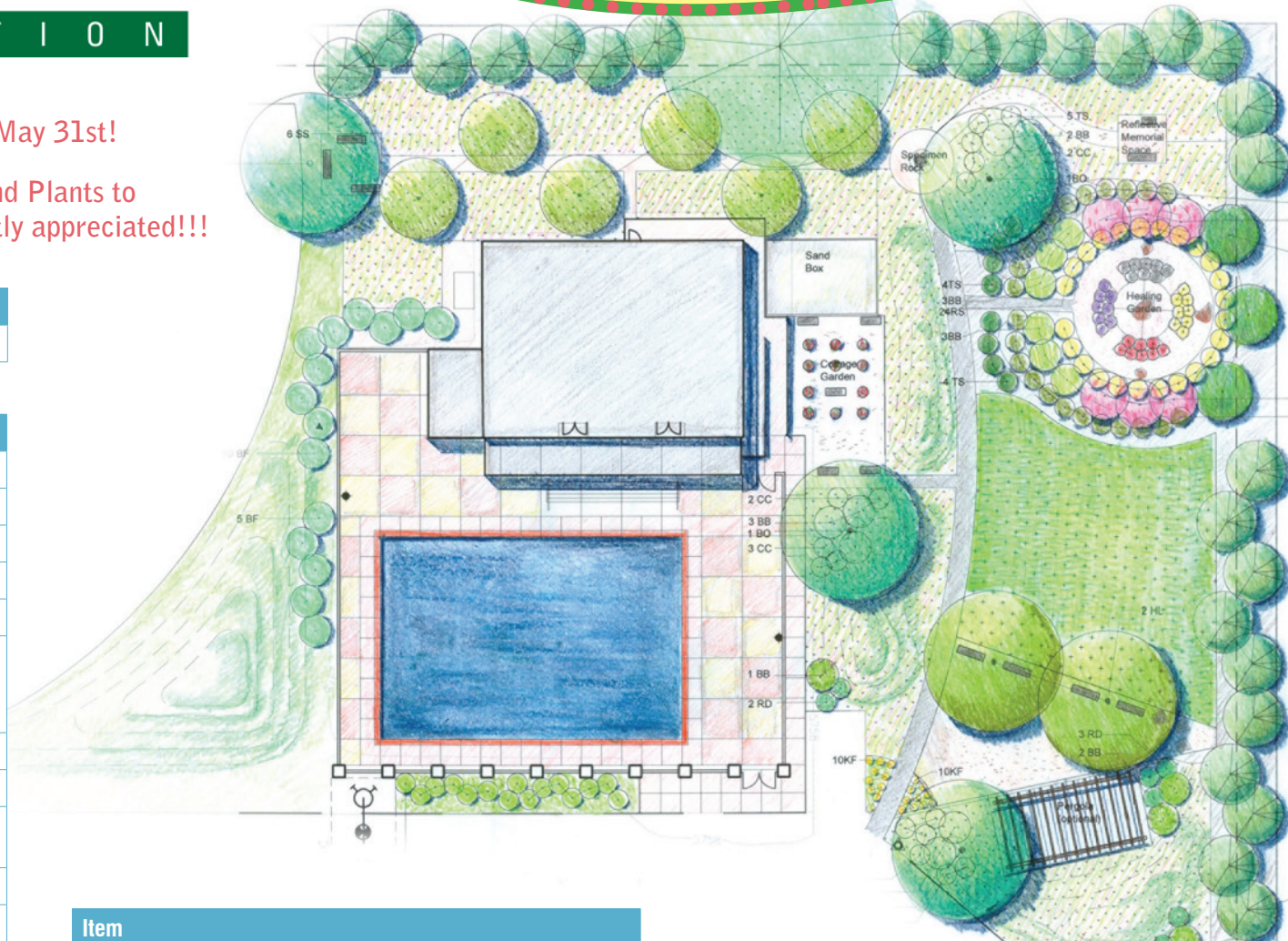
FOUNDATION

Delivery Installation Day is May 31st!

Your Donation of Materials and Plants to Excelsior Youth Center will be greatly appreciated!!!

| TOTAL AREA | |
|--------------|-------------|
| 3958 Sq. Ft. | 0.091 Acres |

| Item | Qty | Unit |
|---|-------|----------|
| Decomposed Granite | 3975 | sq ft |
| Mulch/Fertilizer | 7350 | sq ft |
| Sand | 500 | sq ft |
| DG | 2471 | sq ft |
| Shrubs | 95 | 5 gal. |
| Trees | | |
| • 10' Spruce - 32 | | |
| • Deciduous trees - 15 | | |
| Sod (kentucky blue grass) | 3872 | sq ft |
| Perennials | 59 | 2 gal. |
| Native seeded lawn (mix warm season and cold season/blue gramma grass seed mix) | 13520 | sq ft |
| Planters/barrels/pots | 20 | 24" wide |
| Edgers | 300 | lf |
| Sandstone circle | | |
| Concrete | 1650 | sq ft |
| Irrigation | | |
| Sand box | 1 | |
| Soil Testing | | |
| Soil Ammendments | | |



| Item |
|--|
| Digging Stuff |
| • Spade |
| • Holes for trees |
| Stones/Boneyards |
| • Priority 1 (large boneyards - 2, small boneyards - 3, healing garden center boulder -18" h 3' d - 1) |
| • Priority 2 (6' long slabs - 2, boulder seats - 6) |

| Item |
|--------------------------------------|
| Pool Furniture |
| Furniture (log benches, stone seats) |
| Covered Fire Pit |
| Shade Structure |
| General Donations |

For more information, contact Amie Blue at ABlue@designworkshop.com or 303.623.2616