

# ANTLERS PARK PREFERRED PLAN



## Existing Elements Legend

- 1 Zebulon Pike Monument
- 2 Supperstein Steam Locomotive Bell Tower
- 3 Restroom (to be renovated)
- 4 Historically Significant Trees
- 5 Student Art Tile Mural

## Proposed Improvements Legend

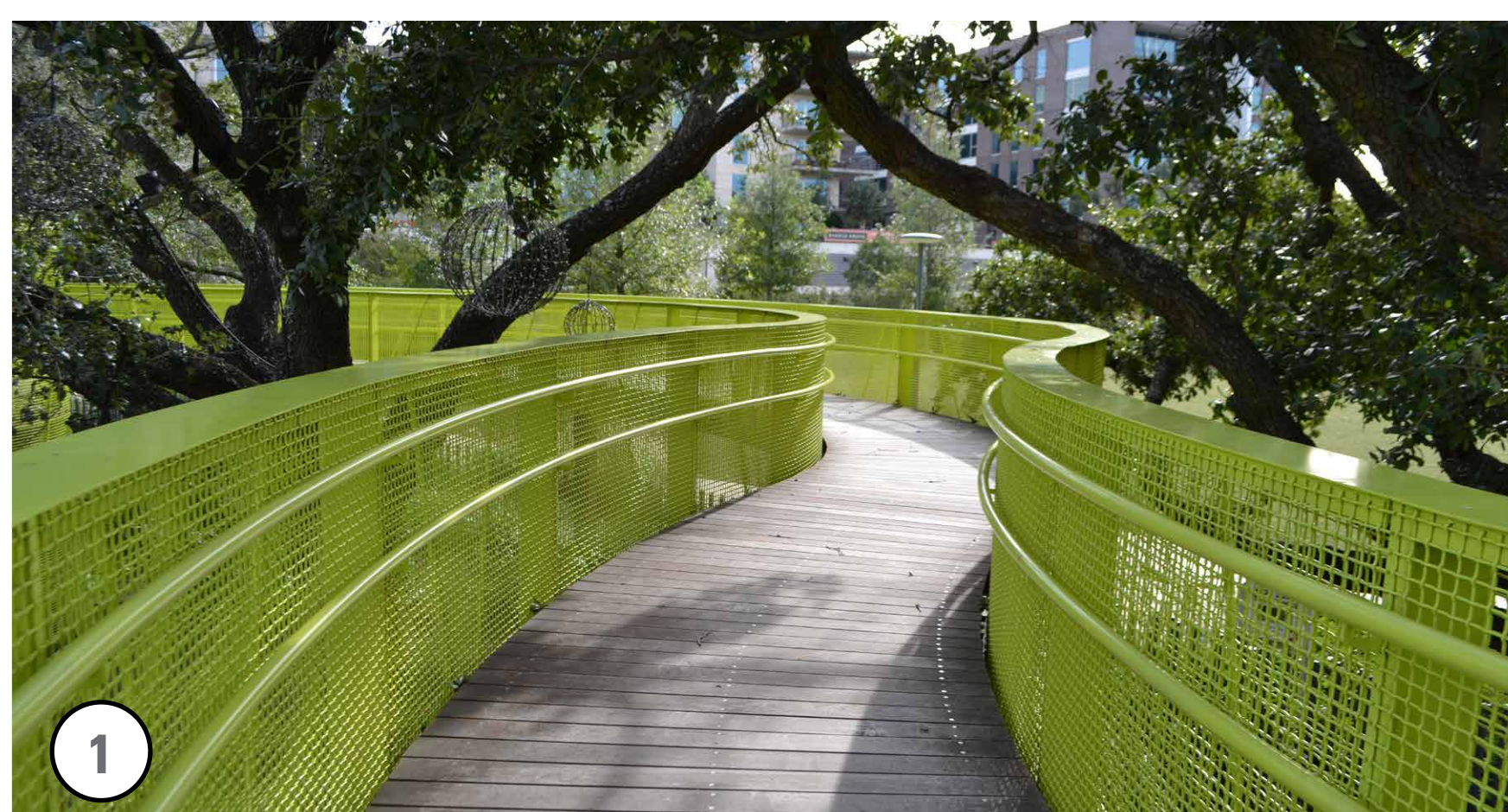
- 1 Tree Canopy Walk
- 2 Canopy Walk Climbing Walls
- 3 City Wild Playground with Signature Nature Play Feature
- 4 Slide Hill
- 5 Garden Plaza and Promenade
- 6 Temporary Stage/Pop-Up Classroom Area
- 7 Picnic and Small Event Lawn
- 8 Trail Signage Connection to Monument Valley Park
- 9 Improved Streetscape along Pikes Peak and Sierra Nevada
- 10 Terraced Seating
- 11 Dog Park Spray Feature
- 12 Dog Park Lawn
- 13 Dog Special Use Area (e.g., small dogs, classes)
- 14 Tree Benches
- 15 Improved SE Pedestrian Access to Park
- 16 Green Screen Wall  
Nature-Themed Illuminated Sculpture Celebrating Historic Trees

## Key

- Dining/Lounge Seating
- Existing Shade Tree
- Proposed Shade Tree
- 10'x10' Market Tent

## THE BIG MOVES

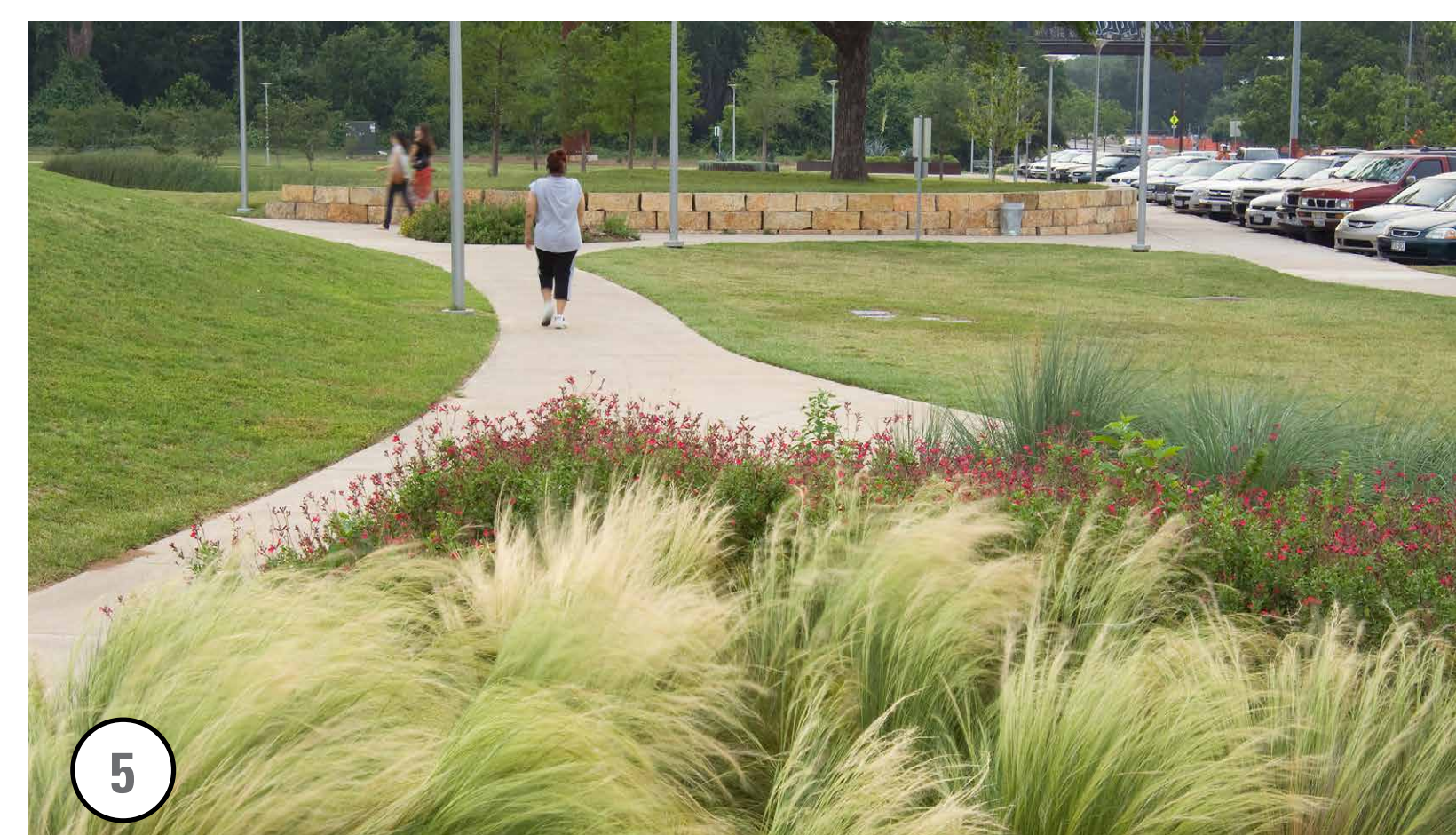
The character imagery below shows proposed, inspirational images of how master plan improvements could look. More refinement to the plan elements will occur during the next design phases.



1 Precedent tree canopy walk at Levy Park, Houston



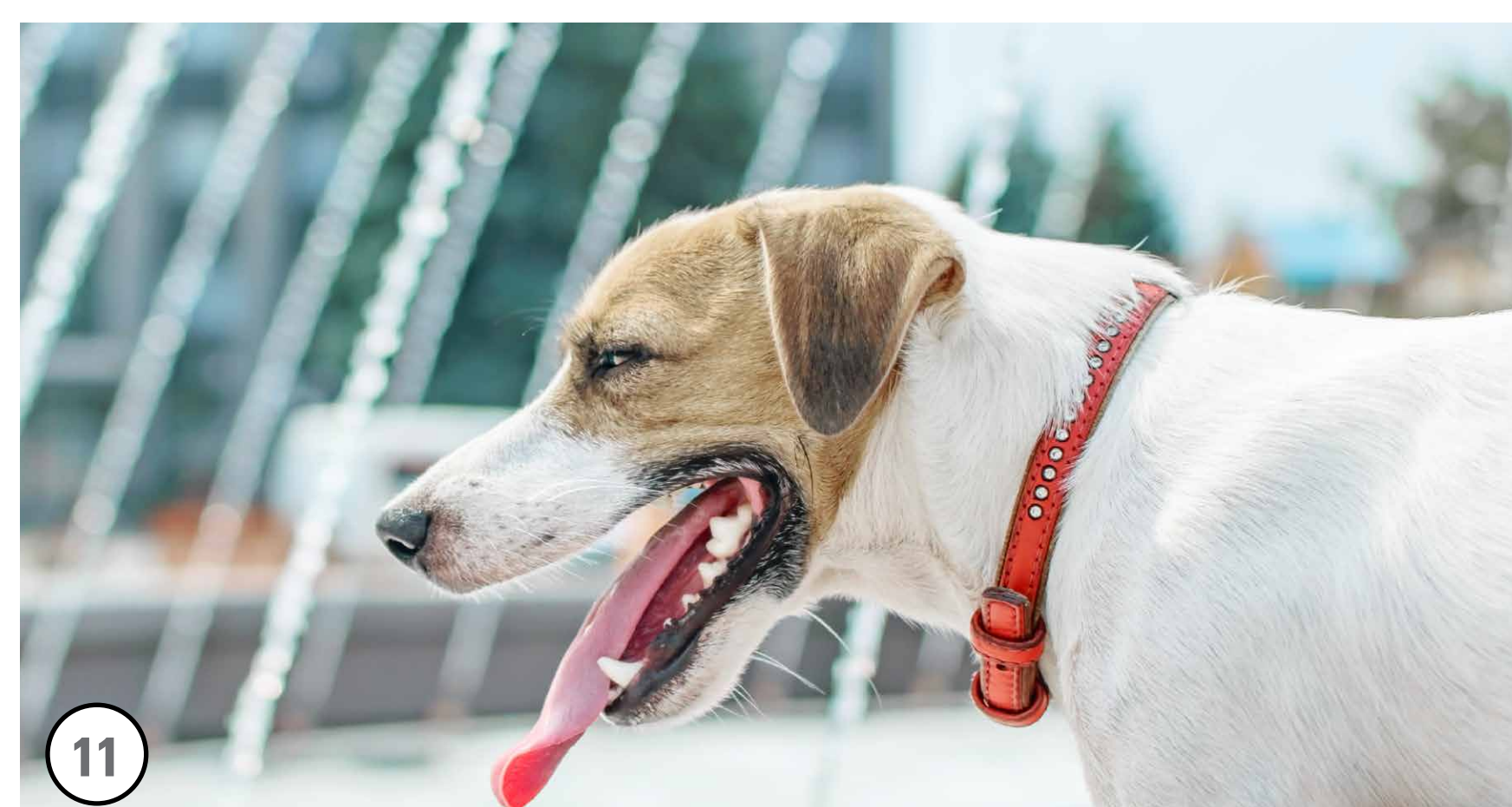
7 The shaded lawn could host informal picnics or be transformed to host temporary events (markets, outdoor theater).



5 COS participants highly ranked garden walk images in fall and winter engagement activities

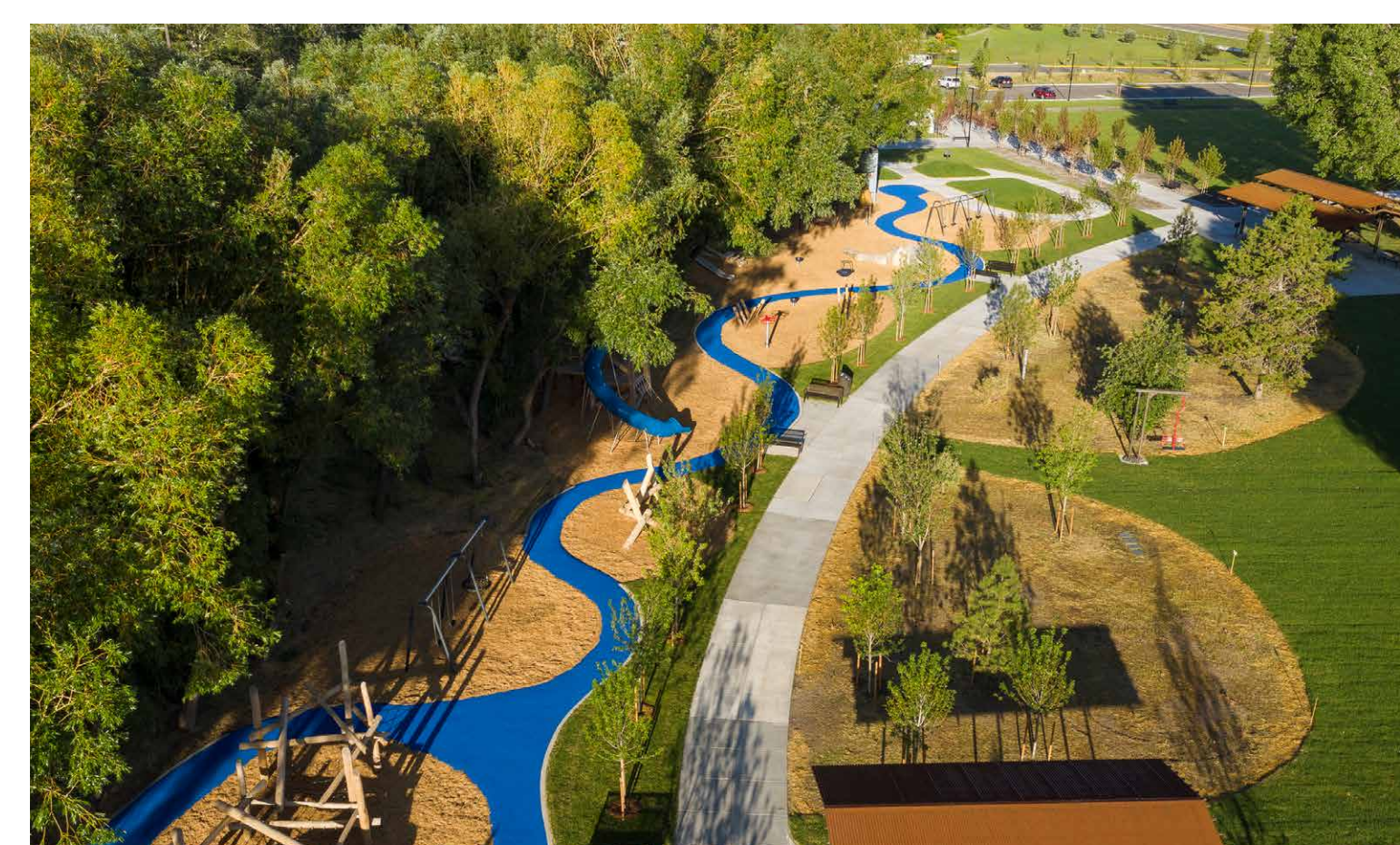


2 Bouldering on 8-10' climbing walls at base of canopy walk face.



11 Dog park with splash pad

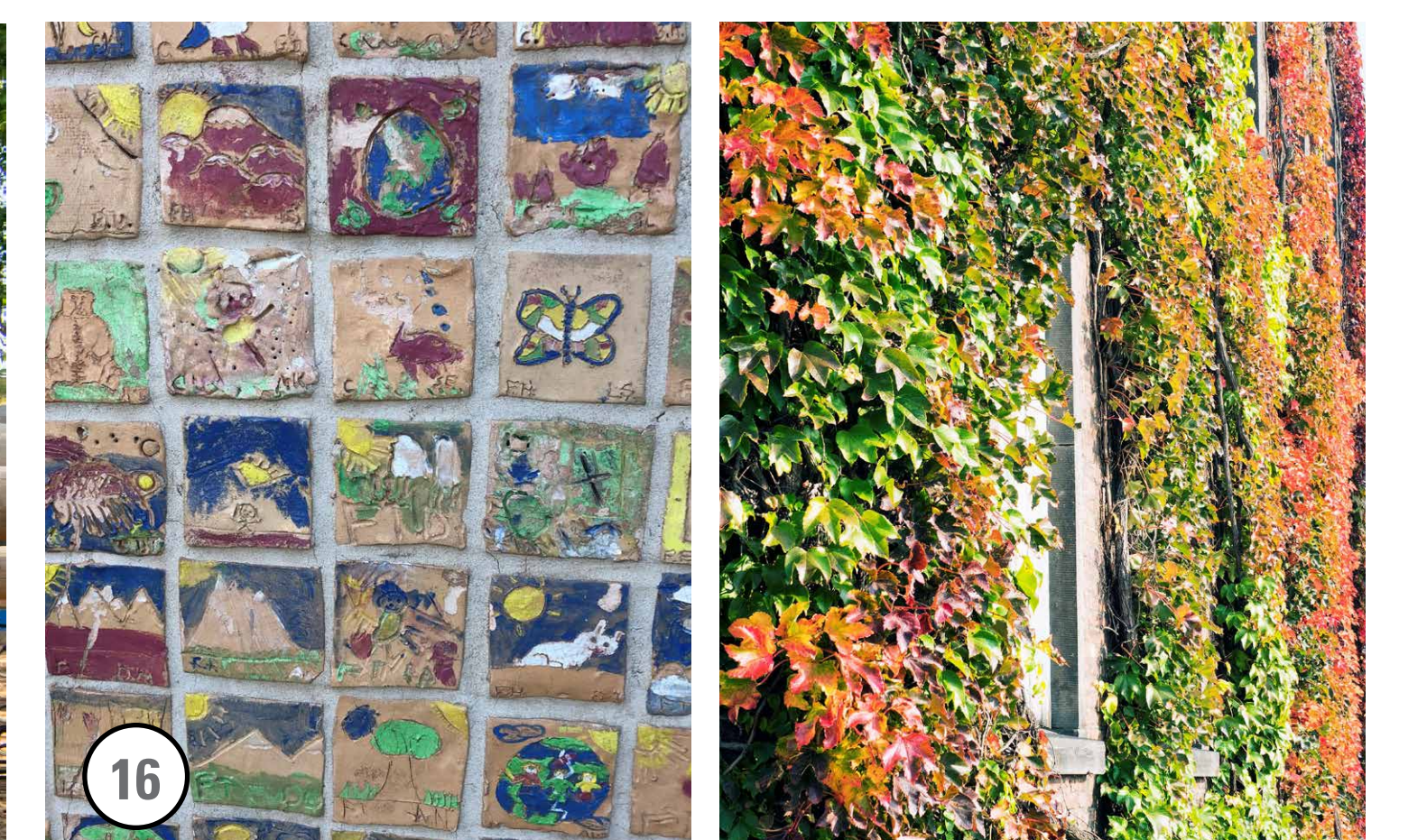
Image Credits: Levy Park Photo-505 Design, Adobe Stock and Design Workshop.



Aerial view of sinuous park pathways of Storymill Park are precedent for Antlers' paths, play areas and garden rooms.



3 Signature play element, the Osprey bird



16 The four story parking garage wall along the east side of the park needs a green touch to help soften this hard edge. Options include a green screen wall combined with public art (including existing student tiles) or decorative screen components.